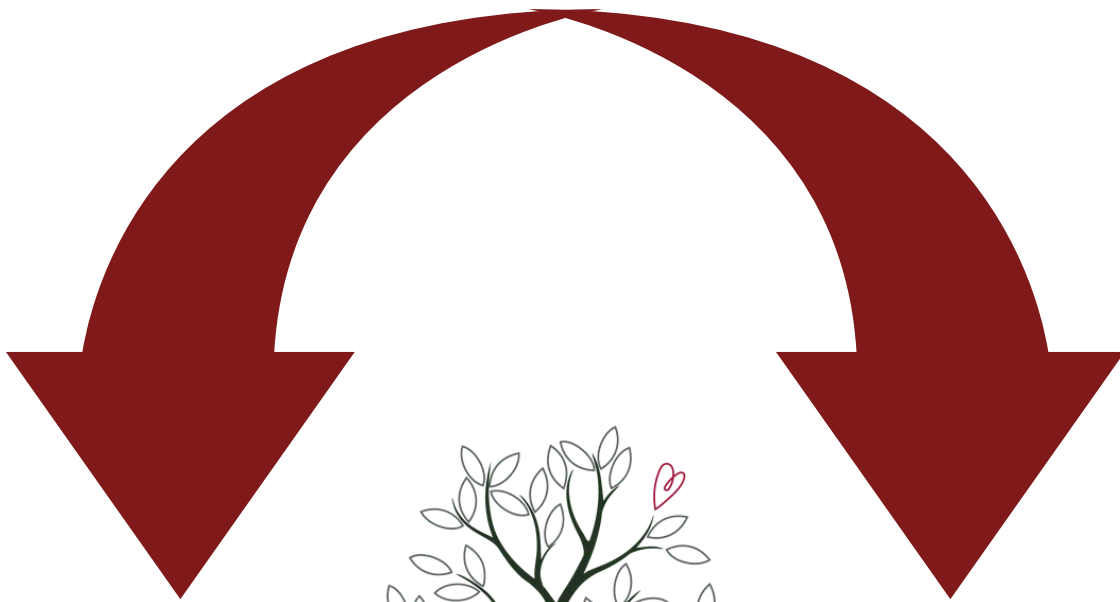


IMPACT REPORT 2021



THE NEW FOUNDATION

Campbell County
HEALTHCARE
FOUNDATION



Northeast

Wyoming

**COMMUNITY HEALTH
FOUNDATION**

DIRECTOR'S NOTE

As Northeast Wyoming Community Health Foundation looks back on a year like no other. We celebrate the bright spots we found amidst uncertain and event moments of tumultuous times. In 2021, our community supported us like we never expected. This annual report highlights that despite the challenges we faced, philanthropy continued to give hope throughout our community.

Because of you, Community Health Foundation saw an increase in the dollars raised from the events we hosted. In addition, your gifts transformed patients' lives, supporting Cancer Care through memorials and Paint Gillette Pink. You enhanced the residents' lives of The Legacy through activities. We have continued to support Lifeline Emergency Response to keep subscribers' monthly costs to \$25 per month. Together, we sent 16 college students' scholarships to support their health care education in hopes they will come back to Gillette to provide care locally.

We have a deep appreciate for all community partners – for rallying behind us, for inspiring transformational giving. None of our work would be possible without your trust and generosity.

nachelle mcgrath
EXECUTIVE DIRECTOR

BOARD & STAFF

Emily Arthun

Arthun Equine
Treasurer

DaNece Day

Day Law
President Elect

Justin Holcomb

First Northern Bank

Leigh Johnson

CCH Cancer Care Director
Cancer Care

Francesca McCaffrey

CCH Pediatrician

Mike McNutt

The Legacy

Kristin McKenney

Contractors Supply
Past President

Kelly Morehead

Westwood High School

JC Reynolds

Kissack Water & Oil
President

Chris Shelledy

White's Frontier Motors
Secretary

Holly Tate

Sydney Wilson

Nachelle McGrath, Executive Director

Ashley Brintle, Program Coordinator

FINANCIAL OVERVIEW

2021 was another very trying year for Community Health Foundation. Over the last eighteen months our organization had to make investments in software, computer and phone technology and health insurance expenses. Because of you, we have been able to still keep our expenses low and increase our savings for the future of Close to Home.

BECAUSE OF YOU

16

HIGH SCHOOL & COLLEGE STUDENTS RECEIVED SCHOLARSHIPS FROM BLACK CAT BALL & FESTIVAL OF TREES FUNDS

\$61,700

RAISED TO BENEFIT RESIDENTS OF THE LEGACY FOR ACTIVITIES, SPECIAL SERVICES AND TWO HANDICAP GOLF CARTS FROM FESTIVAL OF TREES FUNDS

\$84,000

RAISED FROM PAINT GILLETTE PINK TO SUPPORT LOCAL CANCER PATIENTS, WITH GRANTS, GAS CARDS & SERVICES LIKE THE CANCER BOUTIQUE

\$295,000

RAISED FROM FESTIVAL OF TREES TO SUPPORT LIFELINE, CANCER CARE, SCHOLARSHIPS & FUTURE OF CLOSE TO HOME



THANK YOU FOR ALL THE FUN





COMMITMENT TO OUR CANCER COMMUNITY

One of Community Health Foundation's number one priority has been cancer support. We all have been affected by cancer in one way or another. Our goal has been to make treatments more convenient, more compassionate and offer more services to support the patient and their families.

With your help, we have raised funds to support cancer patients in our community for three decades. Our first capital campaign was to raise funds for a linear accelerator. In 2013 we started the Cancer Care Financial Assistance Program offering patients and their families grant opportunities to assist with their financial hardships. In 2018 we embarked on another campaign to raise funds for a PET/CT to allow patients a more convenient, compassionate way to testing.

Most recently, we are excited to announce the remodel of the Cancer Boutique. Community Health Foundation received funds from Festival of Trees and the Wyoming Breast Cancer Initiative to help transform an outdated space into an inviting boutique where cancer patients can get wigs, mastectomy fittings, prosthetic bras, camisoles, and scar/healing patches.

Funds from Paint Gillette Pink, Festival of Trees and the Wyoming Breast Cancer Initiative will continue to support the Cancer Boutique and the Financial Assistance program for years to come.

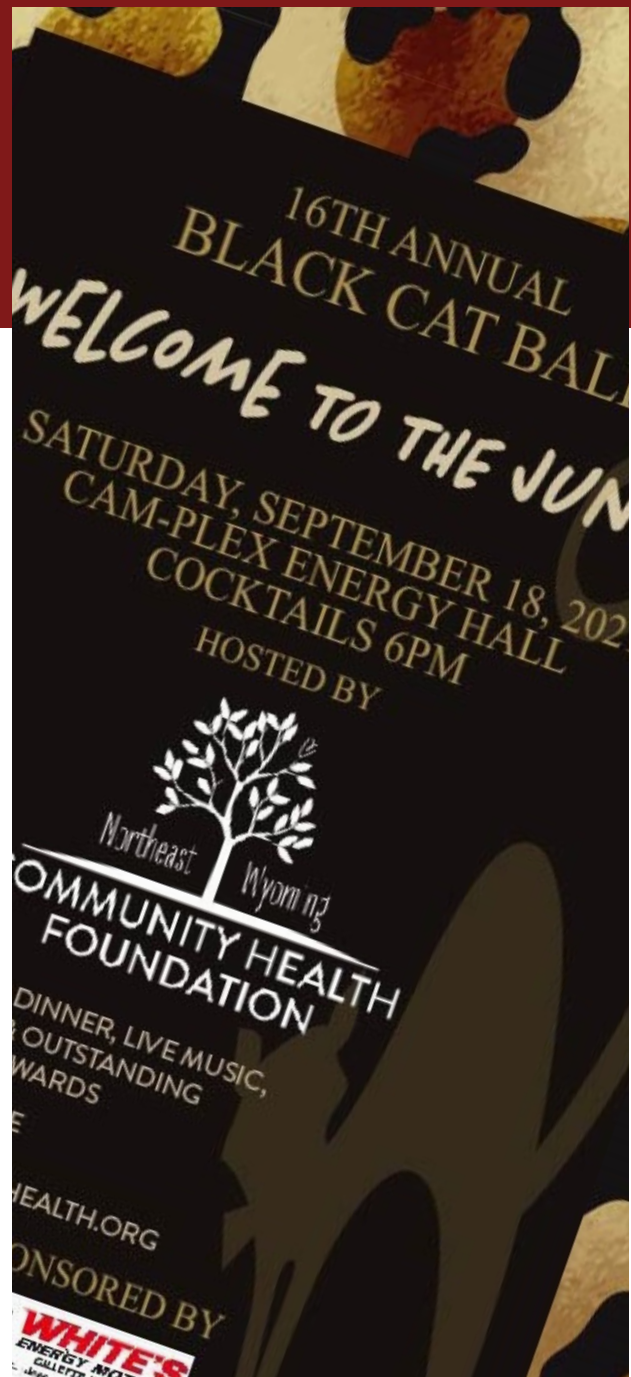
WELCOME TO THE JUNGLE

16TH ANNUAL BLACK CAT BALL

We were so excited to have everyone back! This year's event was full of animal print, celebration, and fundraising. We honored our Outstanding Community Health Awards and partied all night. While we had 11 nominees, five were selected to represent the best in healthcare for 2021.

Karen Clarke, Community Relations, CCH
Derek Friedlan, Care Continuum Director, CCH
Holly Hink, APRN, Pediatric Provider, Kid Clinic
Brodie Rice, Pivot Prosthetics & Orthotics
Anni Stafford, Hand Therapy of Wyoming

This jungle of a party would not be possible without the generous sponsors, guests, and volunteers. Mark your calendars and dust off your boots for our next ball, Friday, September 23rd.



OUR FUTURE



We've had to make some tough decisions over the last couple years, some based on actions we were blind-sided by. The closure of hospice inpatient services at Close to Home was gut wrenching to not just our organization, but to our donors and our community.

We are not giving up hope on what we built for the community. We are hopeful that hospice inpatient services at Close to Home will be restored soon. We stand committed with our donors to ensure families in our community facing end of life decisions have Close to Home as an option.

MARK YOUR CALENDARS

Community Health Golf Scramble
June 25 Bell Nob

17th Annual Black Cat Ball
Boho, Boots + Bling
September 23 Energy Hall

Paint Gillette Pink
October

31st Annual Festival of Trees
November 18 - 20 Wyoming Center



